

Parkway Home

Parkway is a five-bed licensed, Level 3 Residential Care Home operated by Northeast Kingdom Human Services' Developmental Services Division. The facility provides a safe and supportive home for individuals with significant functional and medical support needs.

The Parkway Home strives to embody the DS program's mission of helping individuals with disabilities lead normal and complete lives and to be accepted, valued, and contributing members of their families and communities.



For inquiries, contact:

Peter Kostruba
Director of Residential Services
DS Division, NKHS
(802) 748-6350 ext. 1153
email: pkostruba@nkhs.net

Uniform disclosure is available upon request.



Contact NKHS

181 Crawford Road
Derby, VT 05855
(802) 334-6744

2225 Portland Street
St. Johnsbury, VT 05819
(802) 748-3181

NKHS.org

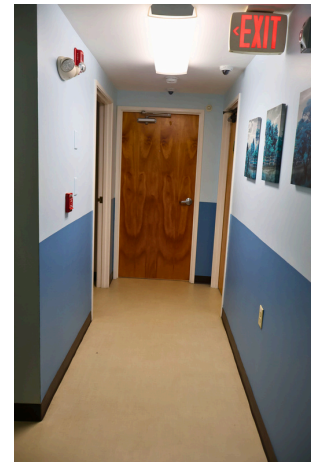
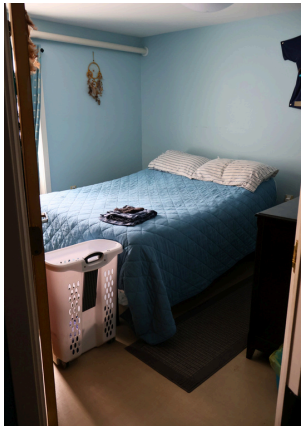
Parkway
Licensed Residential
Care Home



NKHS
Northeast Kingdom Human Services

Services Include:

- 24-hour support and supervision by trained residential staff
- 1:2 staff-to-resident ratio
- Service Coordination/Case Management
- Nursing Oversight
- Medication Management
- Clinical Supports (psychiatric, psychological)
- Behavioral Supports
- Community Access and Support
- Transportation



Amenities:

- Spacious, private bedrooms
- Fully accessible floor plan and bathrooms
- Attractive and well balanced meals, including therapeutic diets
- Access to healthcare services and providers
- Located in downtown St. Johnsbury, Vermont and area amenities including: Northeastern Vermont Regional Hospital • Shopping • Restaurants • Churches • Library • Recreational opportunities